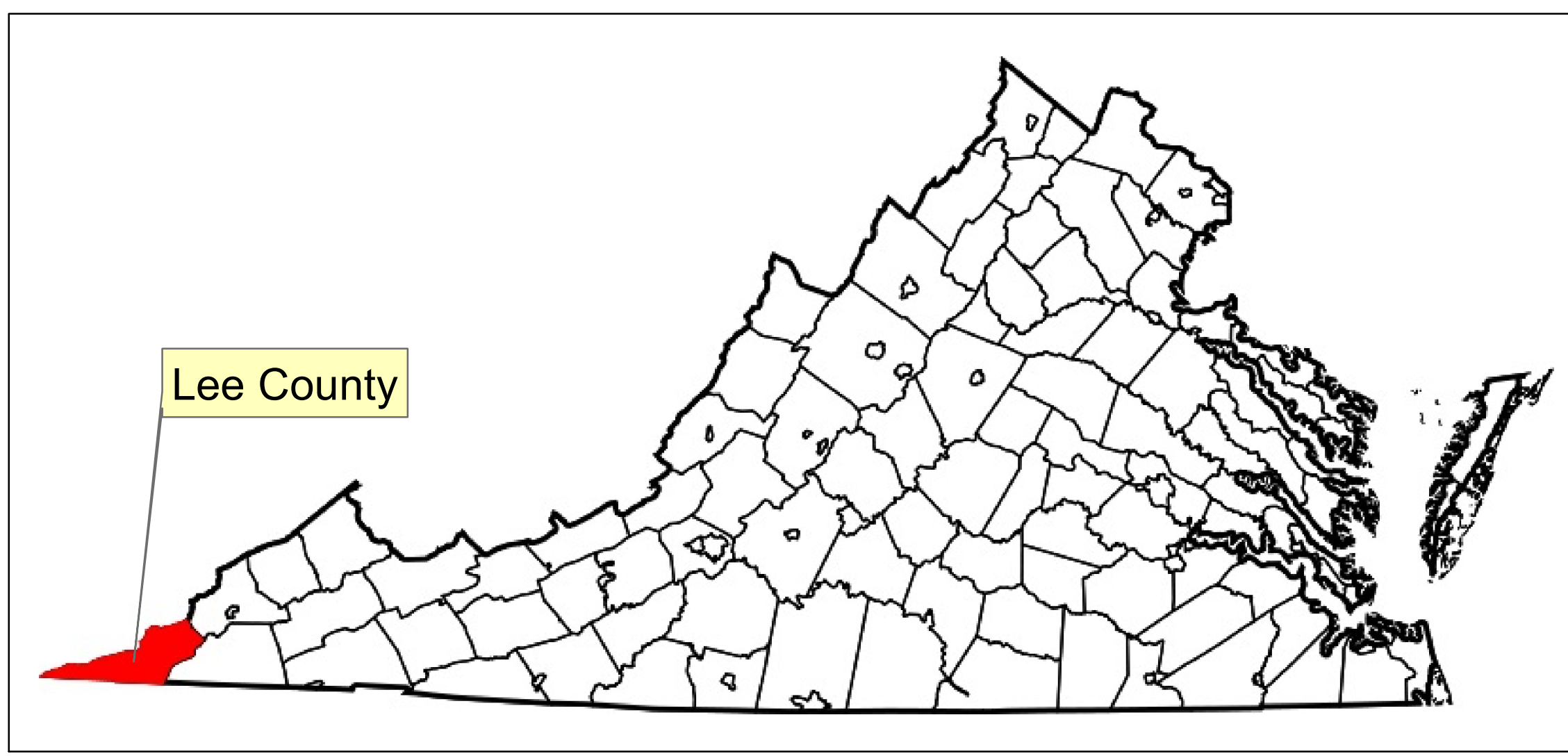
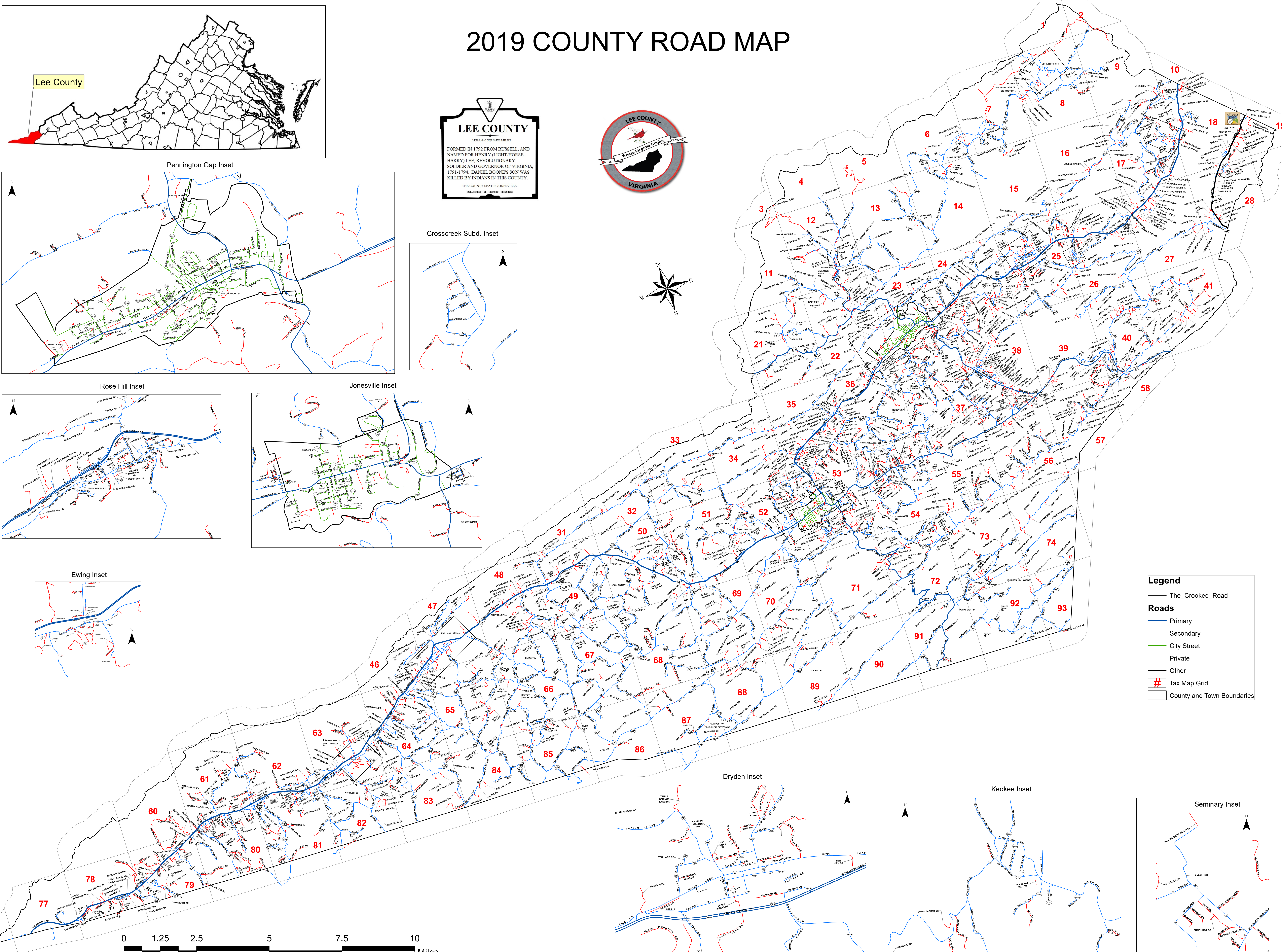
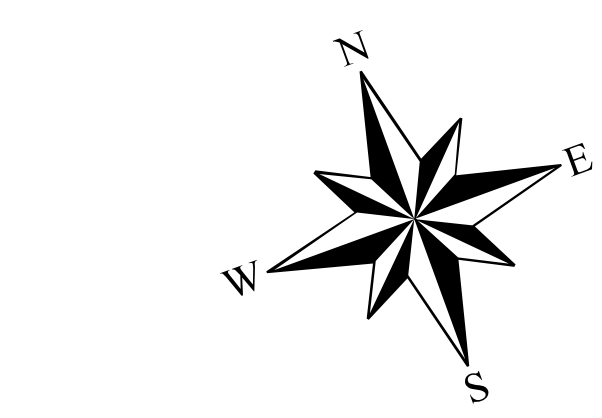
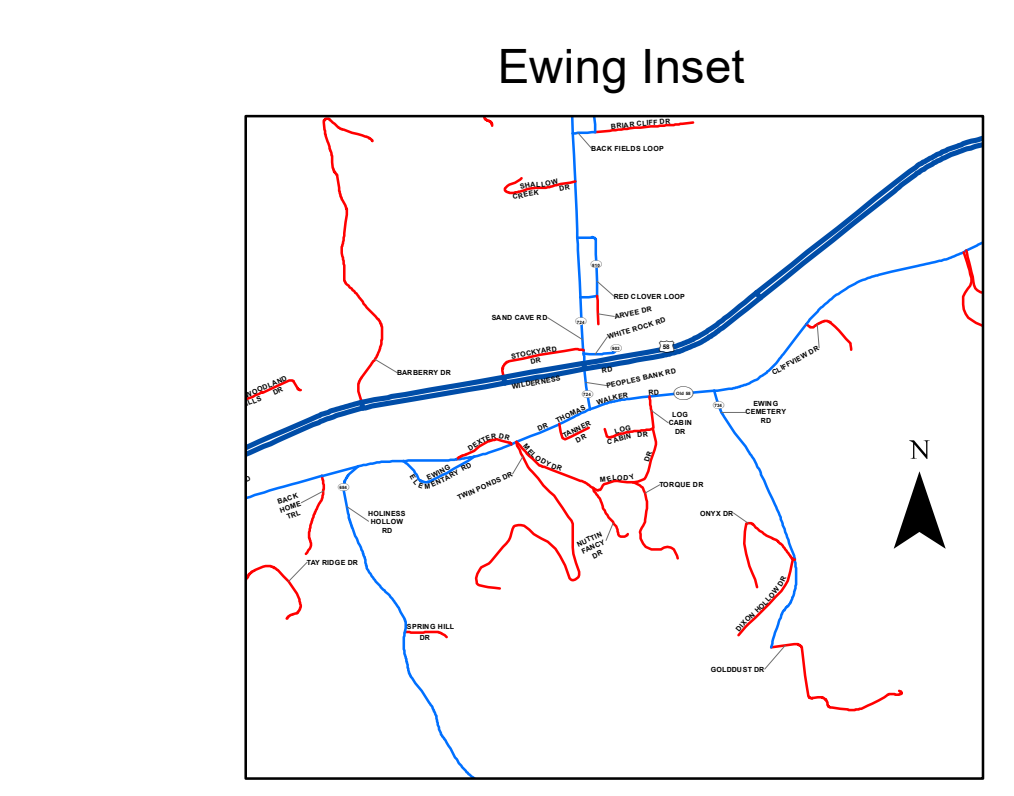
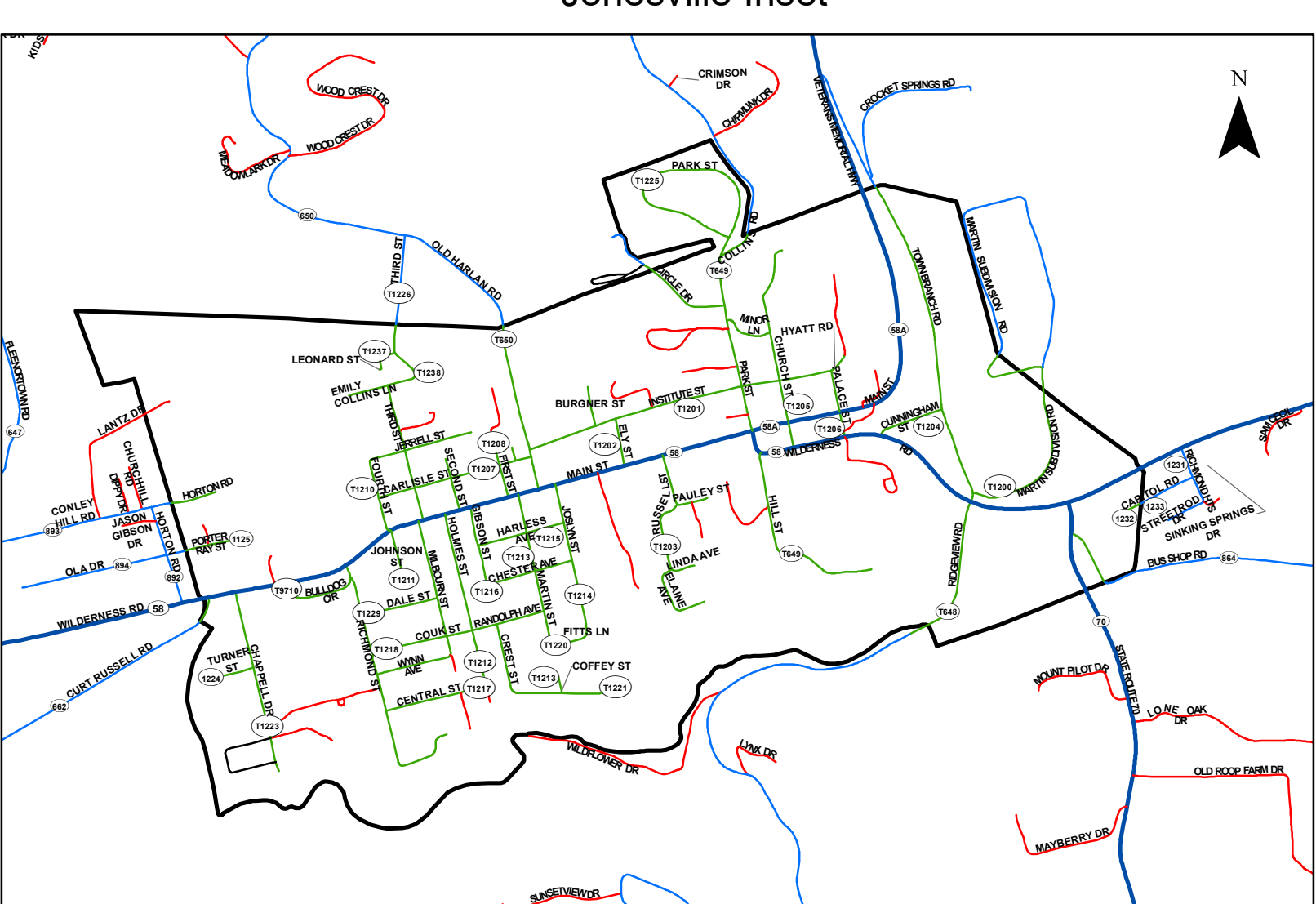
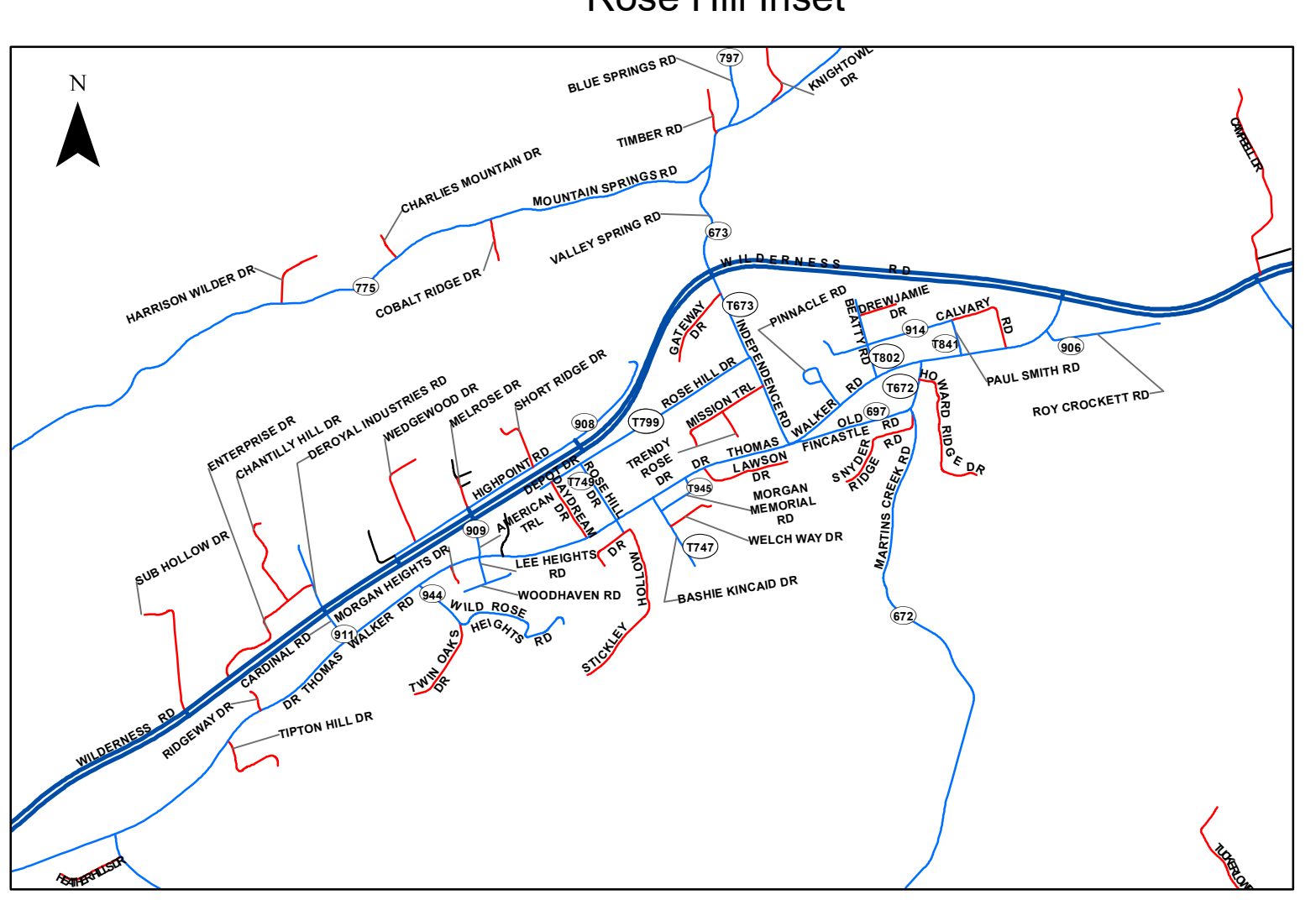
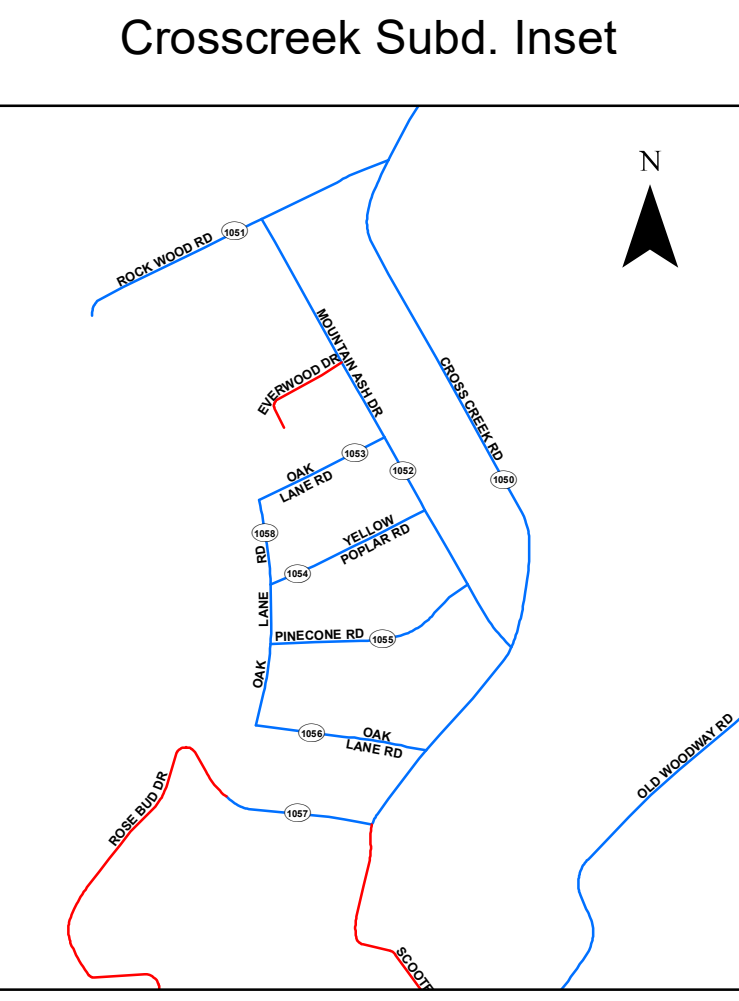
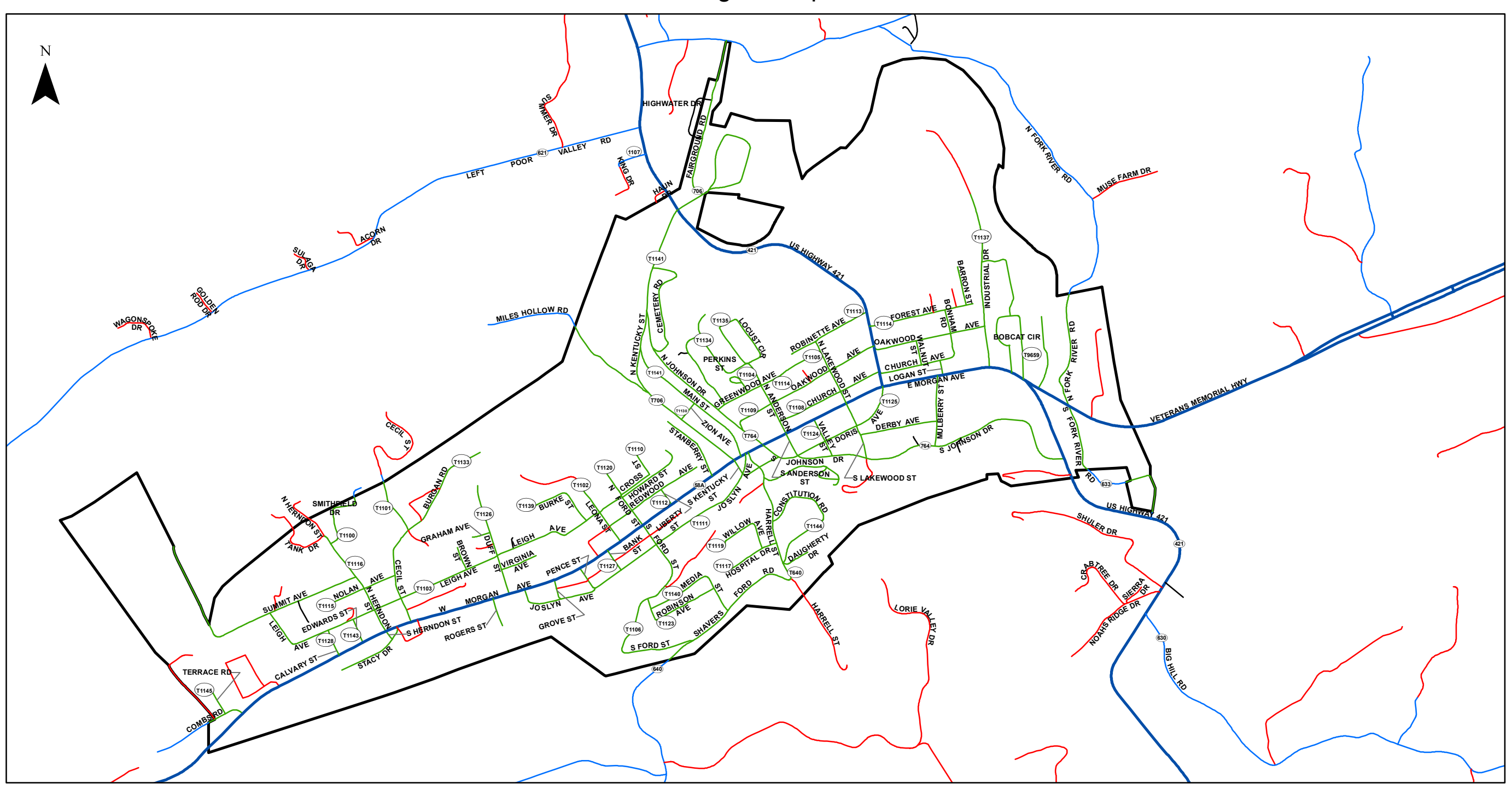
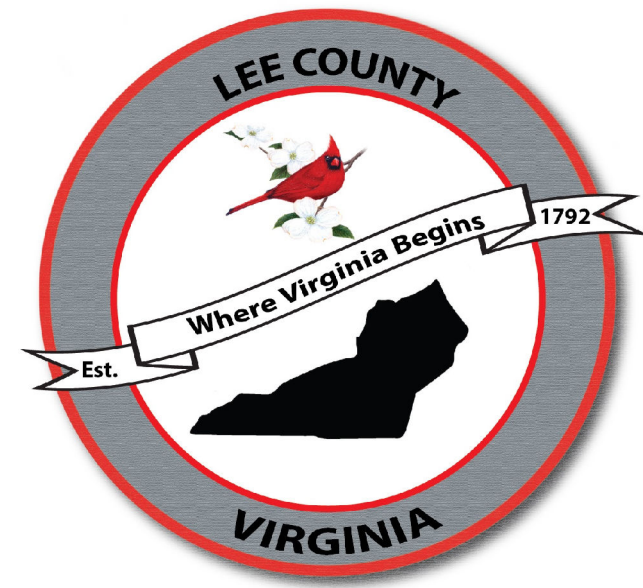


2019 COUNTY ROAD MAP

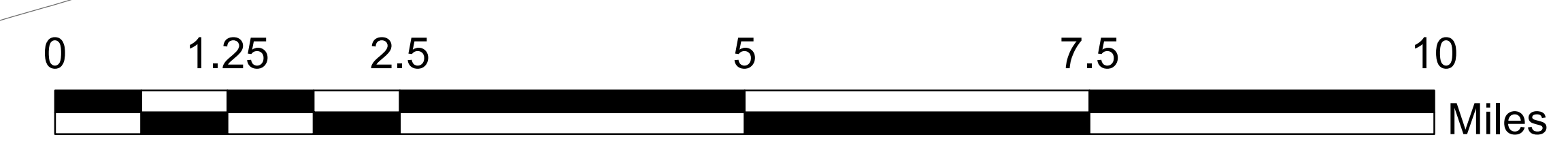


LEE COUNTY
 AREA 444 SQUARE MILES
 FORMED IN 1792 FROM RUSSELL, AND NAMED FOR HENRY (LIGHT-HORSE HARRY) LEE, REVOLUTIONARY SOLDIER AND GOVERNOR OF VIRGINIA, 1791-1794. DANIEL BOONE'S SON WAS KILLED BY INDIANS IN THIS COUNTY.
 THE COUNTY SEAT IS JONESVILLE.
 MEMORIAL OF JEFFERSON: 1792



Legend

- The_Crooked_Road
- Roads**
- Primary
- Secondary
- City Street
- Private
- Other
- Tax Map Grid
- County and Town Boundaries



Map Created by Lee County E-911 Mapping Department
 Roads accurate as of February 2020.